

VIVA
MADE

LACCA

30x60

60x60

80x80

60x120

WOOD

LA
LACCA



Collezione di legni laccati di recupero, caratterizzati da graffi e segni dell'usura.

Le tracce del tempo, il contrasto fra la lucentezza originaria del laccato e il matt dei segni dell'utilizzo costante catturano l'emozione più intima del vissuto in maniera ancora più definita.

Proposta in 4 colori naturali

CENERE / CAFFÈ / NERO / BIANCO

L'H è una collezione destinata ad imprimere originalità e calore ad ambienti ricercati e sofisticati.

Collection of salvaged varnished wood, with scratches and marks left by wear.

Damage caused by time and the contrast between the original gloss of the varnished finish and the matt effect of the marks left by constant use tug at the heart-strings.

Offered in 4 natural colours,

cenere/caffè/nero/bianco

L'H is a collection destined to bestow originality and warmth on refined, sophisticated design schemes.



ADI
CERAMIC
DESIGN
AWARD CERSAIE
2016

Con il patrocinio di
ADI ASSOCIAZIONE
PER IL DISSEGNO
INDUSTRIALE

L'H è stata insignita del Ceramic Design Award 2016

Il premio ADI Ceramics Design Award è nato in collaborazione con l'ADI - Associazione per il Disegno Industriale - nel quadro del programma culturale Costruire Abitare Pensare per valorizzare i prodotti del comparto ceramico italiano che si distinguono per originalità, tecnologia e innovazione.

L'H was awarded at Ceramic Design Award 2016

The award, created in collaboration with ADI - Association for Industrial Design - as part of the cultural activities of the Build Living Thinking Program, highlights the most innovative products of the Italian ceramic industry, selecting the most deserving for their originality, technology and innovation.


































BIANCO







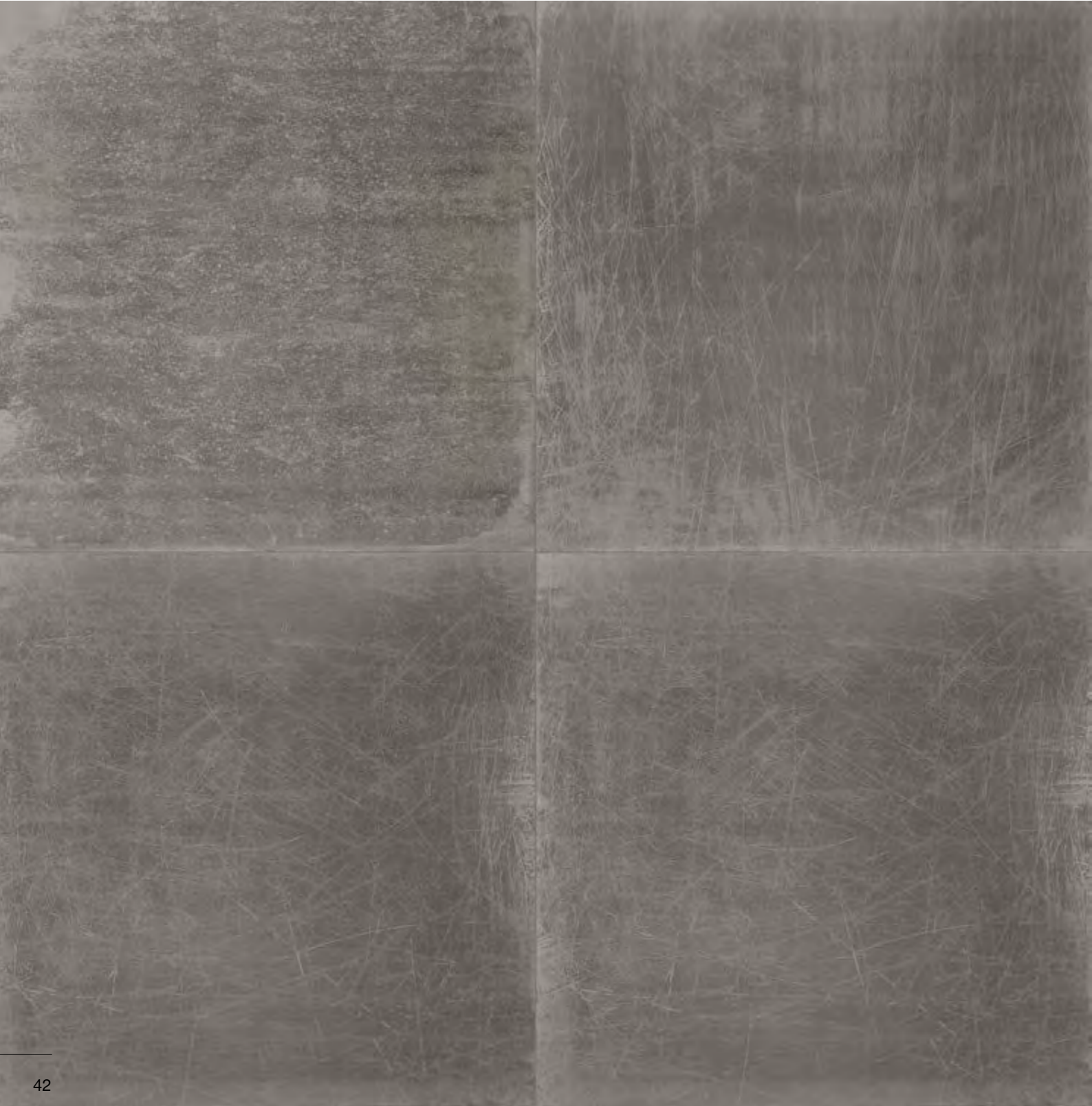
TECHNICAL FEATURES

cenere pag. 42

caffè pag. 48

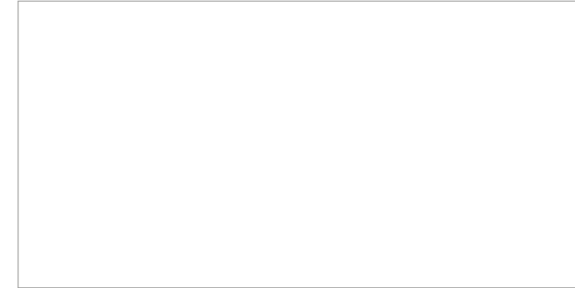
nero pag. 54

bianco pag. 60



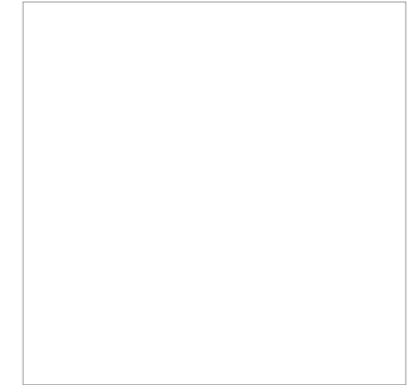
COLORI / FORMATI

colours / sizes
couleurs / formats
farben / formate
colores / tamaños
цвета / форматы



983J3R Cenere Nat. Rett.
60x120 - 23⁵/₈"x47¹/₄"

80 ■



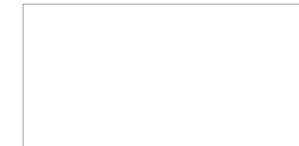
803J3R Cenere Nat. Rett.
80x80 - 31¹/₂"x31¹/₂"

80 ■



603J3R Cenere Nat. Rett.
60x60 - 23⁵/₈"x23⁵/₈"

74 ■

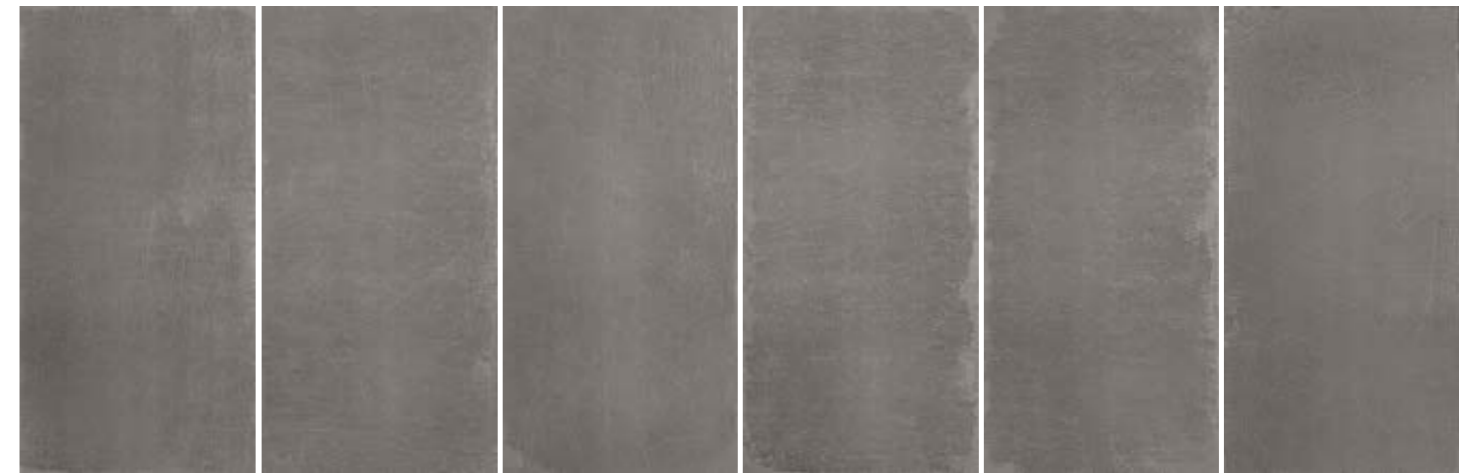


633J3R Cenere Nat. Rett.
30x60 - 11¹³/₁₆"x23⁵/₈"

74 ■

MOVIMENTO GRAFICO

graphic movement
développement graphique
grafische bewegung
movimiento grafico
Графическое движение

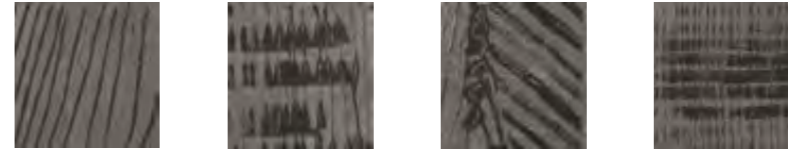




DECORI

decors
decors
dekore
decorados
декоры

Raku



023J3RC Cenera
20x20 - 7⁷/₈"x7⁷/₈"

27 ■

Glassa



633J3RD Cenera Rett.
30x60 - 11¹³/₁₆"x23⁵/₈"

70 ■

Grid



803J3RB Cenera
80x80 - 31¹/₂"x31¹/₂"

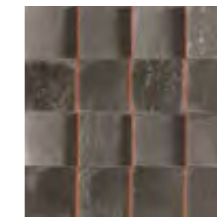
95 ■

Righe



***Mosaico 3D Righe**
D303J3 Cenera
29x29 - 11⁷/₁₆"x11⁷/₁₆" 45 ■

Quadri



***Mosaico 3D Quadri**
T303J3 Cenera
29x29 - 11⁷/₁₆"x11⁷/₁₆" 45 ■

* Su rete in fibra - On fibre mesh backing - Sur filet en fibre de verre - Auf Glasfasernetz - Sobre malla de fibra - На волоконной сетке

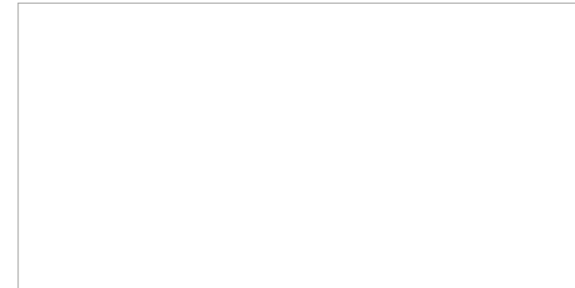


Glassa



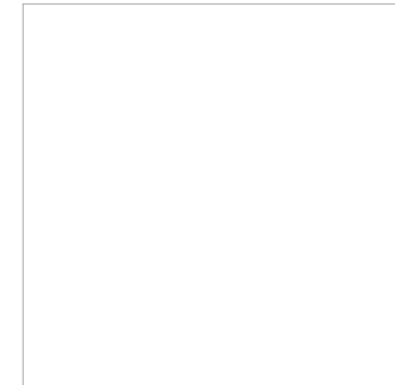
COLORI / FORMATI

colours / sizes
couleurs / formats
farben / formate
colores / tamaños
цвета / форматы



983J8R Caffè Nat. Rett.
60x120 - 23^{5/8}"x47^{1/4}"

80 ■



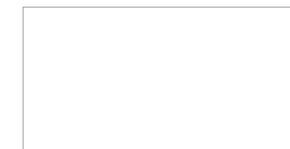
803J8R Caffè Nat. Rett.
80x80 - 31^{1/2}"x31^{1/2}"

80 ■



603J8R Caffè Nat. Rett.
60x60 - 23^{5/8}"x23^{5/8}"

74 ■



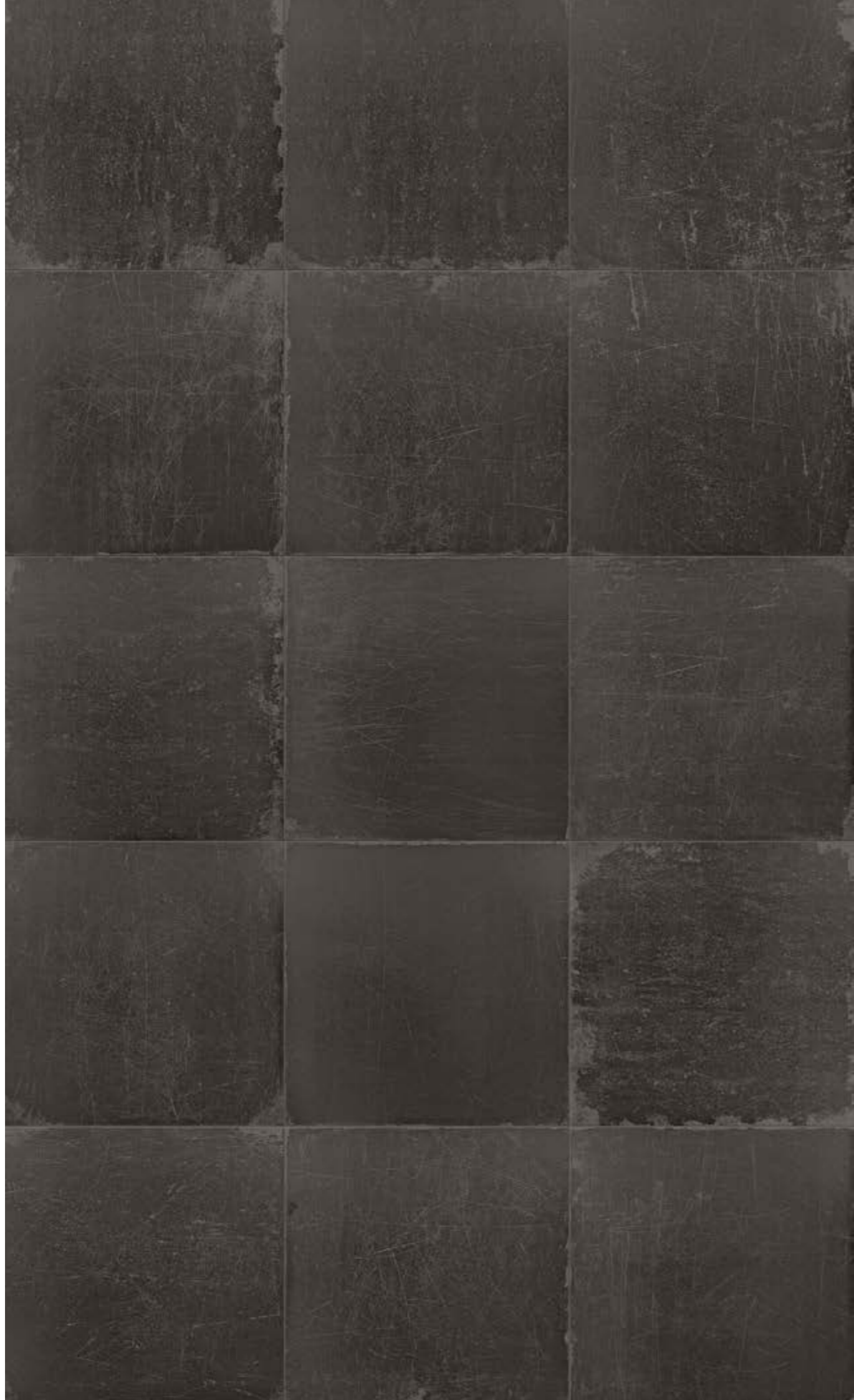
633J8R Caffè Nat. Rett.
30x60 - 11^{13/16}"x23^{5/8}"

74 ■

MOVIMENTO GRAFICO

graphic movement
développement graphique
grafische bewegung
movimiento grafico
графическое движение





DECORI

decors
decors
dekore
decorados
декоры

Raku



023J8RC Caffè
20x20 - 7⁷/₈"x7⁷/₈"

27 ■

Glassa



633J8RD Caffè Rett.
30x60 - 11¹³/₁₆"x23⁵/₈"

70 ■

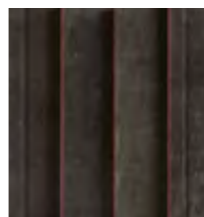
Grid



803J8RB Caffè
80x80 - 31¹/₂"x31¹/₂"

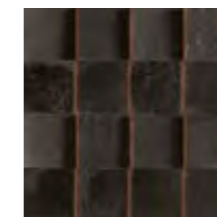
95 ■

Righe



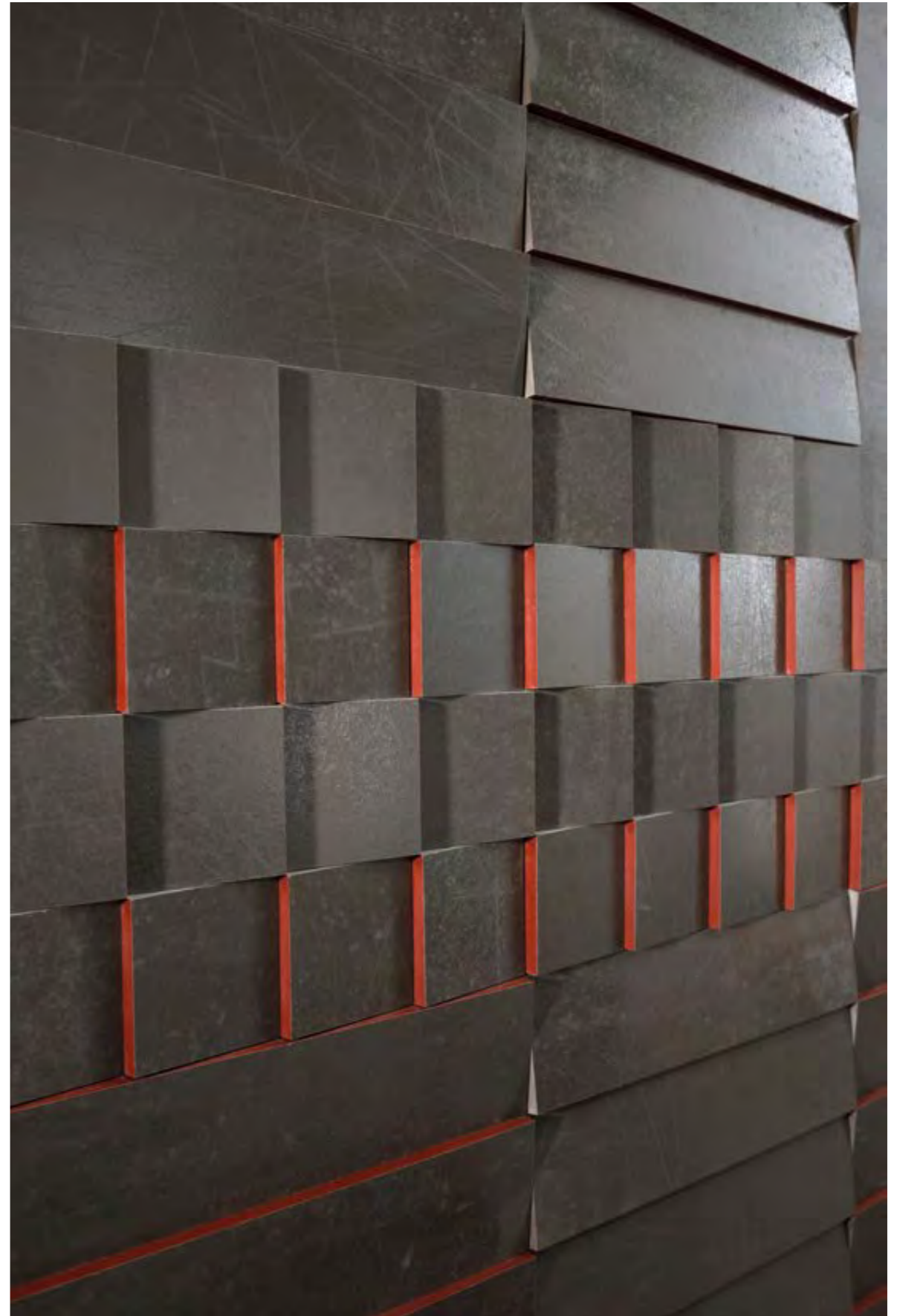
***Mosaico 3D Righe**
D303J8 Caffè
29x29 - 11⁷/₁₆"x11⁷/₁₆" 45 ■

Quadri



***Mosaico 3D Quadri**
T303J8 Caffè
29x29 - 11⁷/₁₆"x11⁷/₁₆" 45 ■

* Su rete in fibra - On fibre mesh backing - Sur filet en fibre de verre - Auf Glasfasernetz - Sobre malla de fibra - На волоконной сетке

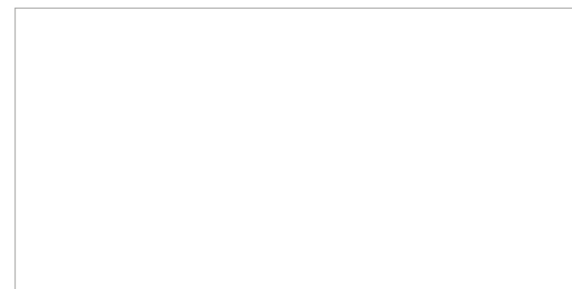


Mosaico 3D Righe - Quadri



COLORI / FORMATI

colours / sizes
couleurs / formats
farben / formate
colores / tamaños
цвета / форматы



983J9R Nero Nat. Rett.
60x120 - 23^{5/8}"x47^{1/4}"

80 ■



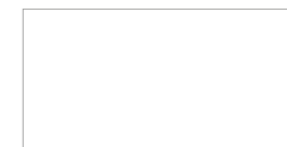
803J9R Nero Nat. Rett.
80x80 - 31^{1/2}"x31^{1/2}"

80 ■



603J9R Nero Nat. Rett.
60x60 - 23^{5/8}"x23^{5/8}"

74 ■



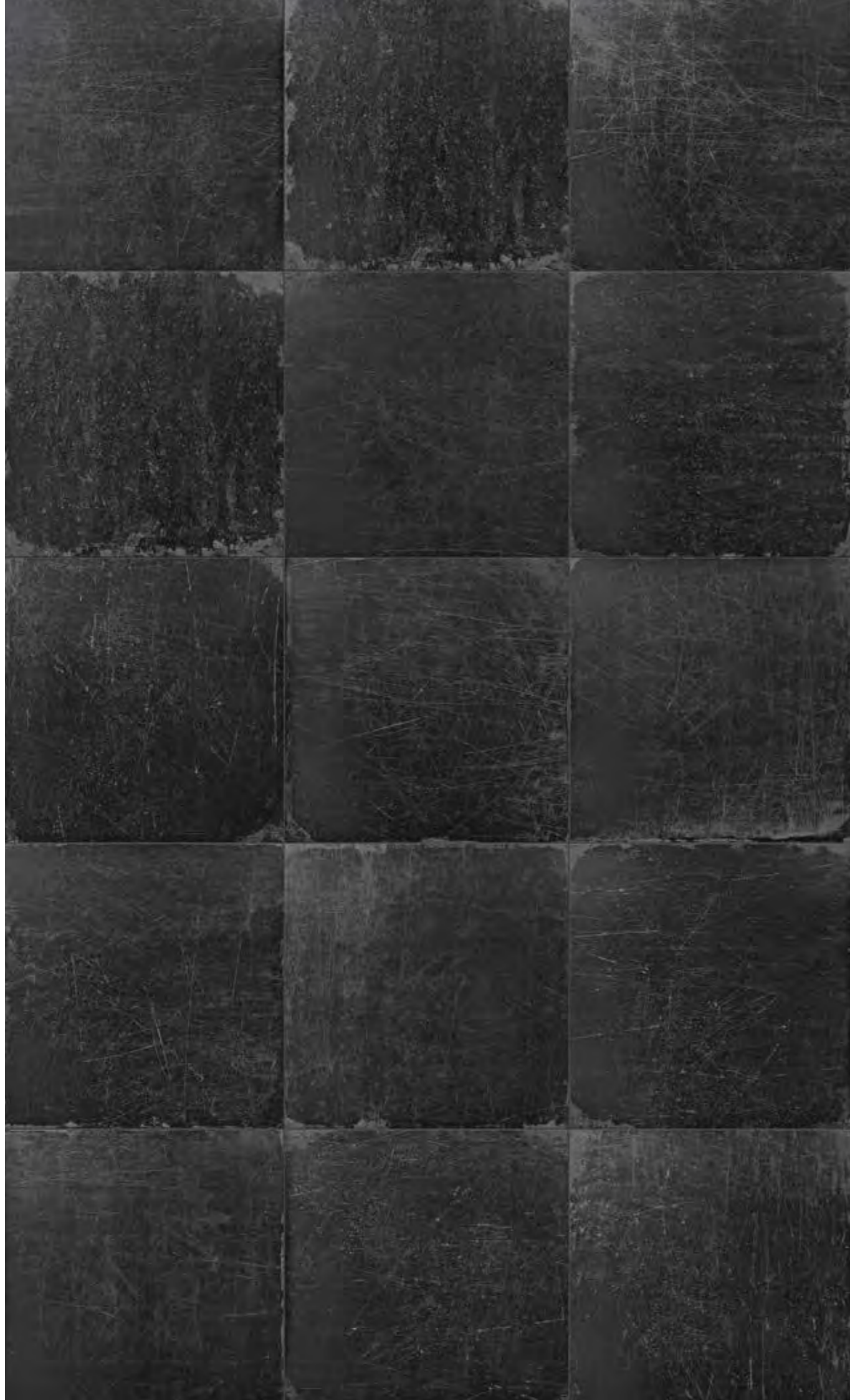
633J9R Nero Nat. Rett.
30x60 - 11^{13/16}"x23^{5/8}"

74 ■

MOVIMENTO GRAFICO

graphic movement
développement graphique
grafische bewegung
movimiento grafico
графическое движение

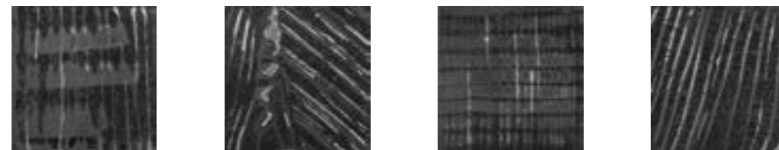




DECORI

decors
decors
dekore
decorados
декоры

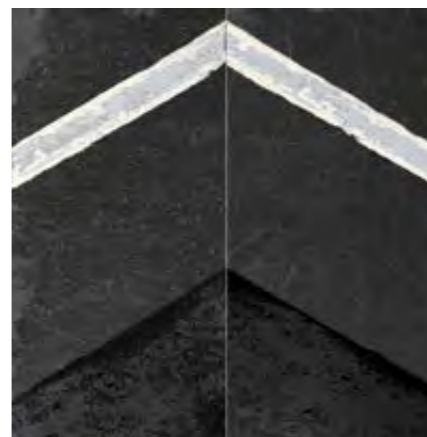
Raku



023J9RC Nero
20x20 - 7⁷/₈"x7⁷/₈"

27 ■

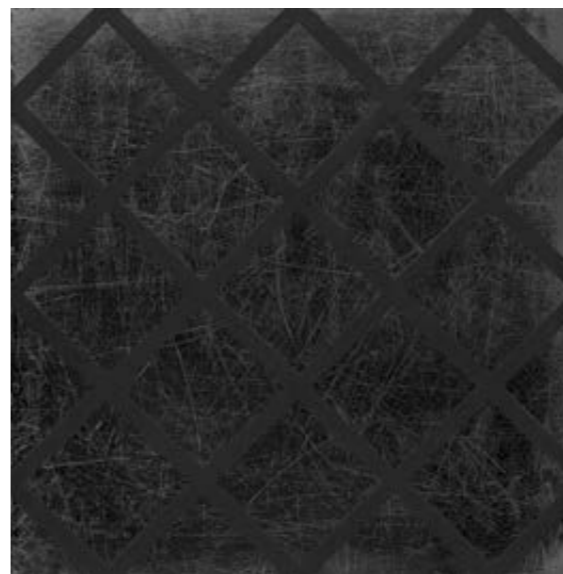
Glassa



633J9RD Nero Rett.
30x60 - 11¹³/₁₆"x23⁵/₈"

70 ■

Grid



803J9RB Nero
80x80 - 31¹/₂"x31¹/₂"

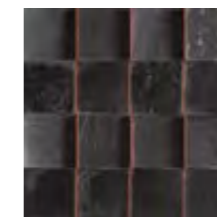
95 ■

Righe



***Mosaico 3D Righe**
D303J9 Nero
29x29 - 11⁷/₁₆"x11⁷/₁₆" 45 ■

Quadri



***Mosaico 3D Quadri**
T303J9 Nero
29x29 - 11⁷/₁₆"x11⁷/₁₆" 45 ■

Ciotolo



***Mosaico 3D Ciotoli**
I303J9 Nero Nat.
30x30 - 11¹³/₁₆"x11¹³/₁₆" 54 ■

Tessera - Chip 2,8x2,8 - 1¹/₈"x1¹/₈"

* Su rete in fibra - On fibre mesh backing - Sur filet en fibre de verre - Auf Glasfasernetz - Sobre malla de fibra - На волоконной сетке



Raku



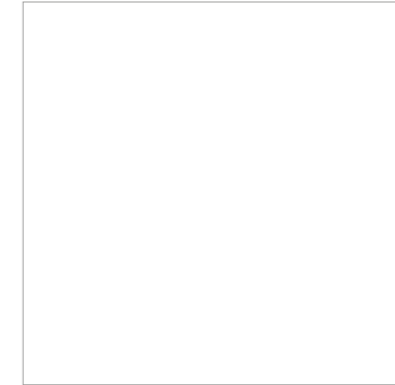
COLORI / FORMATI

colours / sizes
couleurs / formats
farben / formate
colores / tamaños
цвета / форматы



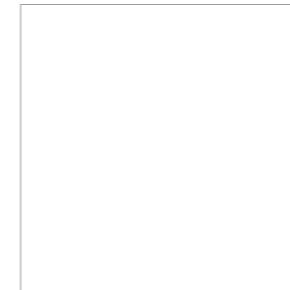
983JOR Bianco Nat. Rett. U₃₅ P₃ E₃ C₂
60x120 - 23^{5/8}"x47^{1/4}"

80 ■



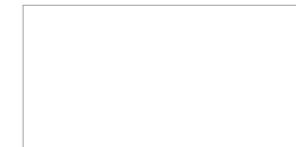
803JOR Bianco Nat. Rett. U₃₅ P₃ E₃ C₂
80x80 - 31^{1/2}"x31^{1/2}"

80 ■



603JOR Bianco Nat. Rett. U₃₅ P₃ E₃ C₂
60x60 - 23^{5/8}"x23^{5/8}"

74 ■



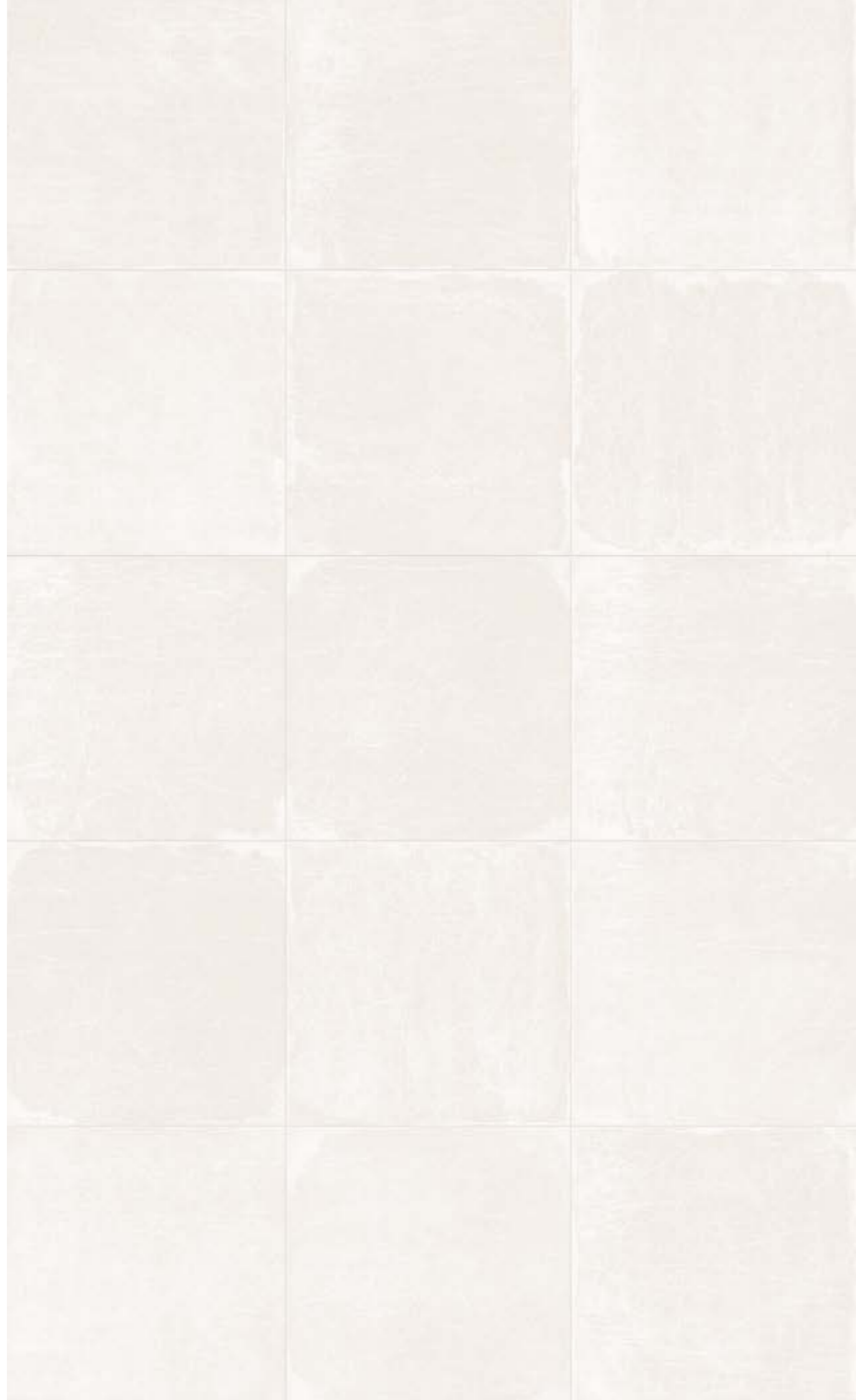
633JOR Bianco Nat. Rett. U₃₅ P₃ E₃ C₂
30x60 - 11^{13/16}"x23^{5/8}"

74 ■

MOVIMENTO GRAFICO

graphic movement
développement graphique
grafische bewegung
movimiento grafico
графическое движение

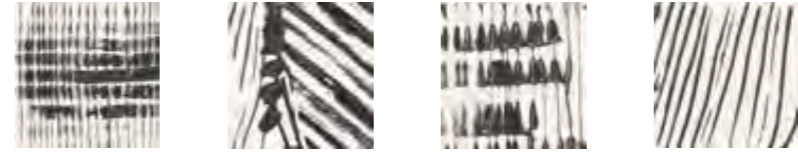




DECORI

decors
decors
dekore
decorados
декоры

Raku



023J0RC Bianco
20x20 - 7^{7/8}"x7^{7/8}"

27 ■

Glassa



633J0RD Bianco Rett.
30x60 - 11^{13/16}"x23^{5/8}"

70 ■

Grid



803J0RB Bianco
80x80 - 31^{1/2}"x31^{1/2}"

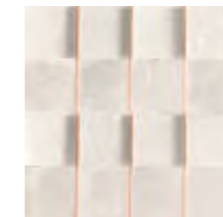
95 ■

Righe



***Mosaico 3D Righe**
D303J0 Bianco
29x29 - 11^{7/16}"x11^{7/16}" 45 ■

Quadri



***Mosaico 3D Quadri**
T303J0 Bianco
29x29 - 11^{7/16}"x11^{7/16}" 45 ■

Ciotolo



***Mosaico 3D Ciotoli**
I303J0 Bianco Nat.
30x30 - 11^{13/16}"x11^{13/16}" 54 ■

Tessera - Chip 2,8x2,8 - 1^{1/8}"x1^{1/8}"

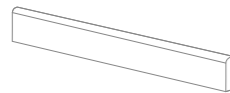
* Su rete in fibra - On fibre mesh backing - Sur filet en fibre de verre - Auf Glasfasernetz - Sobre malla de fibra - На волоконной сетке



Grid

PEZZI SPECIALI

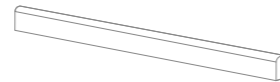
- Trims
- Pieces Speciales
- Formteile
- Piezas Especiales
- Специальные Изделия



BATTISCOPA - SKIRTING
7,5x60 - 2^{15/16}"x23^{5/8}"

- 873J0R Bianco Nat. Rett.
- 873J8R Caffè Nat. Rett.
- 873J3R Cenere Nat. Rett.
- 873J9R Nero Nat. Rett.

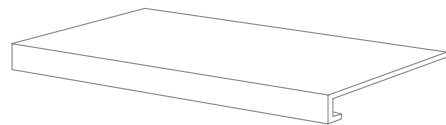
PCS. BOX. 15 10 ■



BATTISCOPA - SKIRTING
4,6x80 - 1^{13/16}"x31^{1/2}"

- B23J0R Bianco Nat. Rett.
- B23J8R Caffè Nat. Rett.
- B23J3R Cenere Nat. Rett.
- B23J9R Nero Nat. Rett.

PCS. BOX. 12 17 ■



GRADONE - STEP
33x120x3,2x3,2 - 12^{15/16}"x47^{1/4}"x1^{1/4}"x1^{1/4}"

- CR3J0R Bianco Nat. Rett.
- CR3J8R Caffè Nat. Rett.
- CR3J3R Cenere Nat. Rett.
- CR3J9R Nero Nat. Rett.

PCS. BOX. 2 96 ■



ANGOLARE DX / SX - CORNER TILE DX / SX
33x120x3,2x3,2 - 12^{15/16}"x47^{1/4}"x1^{1/4}"x1^{1/4}"

- AC3J0RD / AC3J0RS Bianco Nat. Rett.
- AC3J8RD / AC3J8RS Caffè Nat. Rett.
- AC3J3RD / AC3J3RS Cenere Nat. Rett.
- AC3J9RD / AC3J9RS Nero Nat. Rett.

PCS. BOX. 1 98 ■



DRY - PRESSED CERAMIC TILES ISO 13006 ANNEX G - UNI EN 14411 ANNEX G - Bla GL



CARATTERISTICHE TECNICHE		NORMA	VALORI
Technical Features - Características Técnicas - Technische Eigenschaften Technische Eigenschaften - Características Técnicas - Технические Характеристики		Standard - Norme Norm - Norma - Norma	Value - Valeur Vorgabe - Valor - Средние
	PLANARITÀ Flatness - Planéité - Ebenflächigkeit - Planiyud - Плоскостность	UNI EN ISO 10545/2	± 0,26% / ± 1,5 mm
		ASTM C485 WARPAGE	-
		CALIBRATED ± 0,75% (MAX ± 0,09 IN)	-
		RECTIFIED ± 0,40% (MAX ± 0,05 IN-SIZE ≤ 60 cm) (MAX ± 0,07 IN-SIZE > 60 cm)	± 0,25% (MAX ± 0,05 IN-SIZE ≤ 60 cm) (MAX ± 0,07 IN-SIZE > 60 cm)
	ASSORBIMENTO D'ACQUA (VALORE MEDIO IN %) Water absorption (Average value expressed in %) - Absorption d'eau (Valeur moyenne en %) Wasseraufnahme (Durchschnittswert in %) - Absorción de agua (Valor medio en %) Поглощение воды	UNI EN ISO 10545/3 ≤ 0,5 %	CONFOR ME
		ASTM C373	COMPLIANT
	RESISTENZA ALLA FLESSIONE Modulus of rupture - Resistance a la flexion - Biegefestigkeit Resistencia a la flexion - Прочность на изгиб	UNI EN ISO 10545/4	≥ 50 N/mm ²
		FORZA DI ROTTURA Breaking strength - Résistance à la rupture - Bruchlast Resistencia a la rotura - Разрывное усилие	UNI EN ISO 10545/4 ASTM C648
	RESISTENZA AL GELO Frost resistance - Résistance au gel - Frostbeständigkeit - Resistencia a las heladas - Морозостойкость	UNI EN ISO 10545/12 ASTM C1026	CONFORME UNAFFECTED
			RESISTENZA CHIMICA AD ALTE E BASSE CONCENTRAZIONI DI ACIDI E BASI Chemical resistance to high and low acid and basic concentrations Résistance chimique aux hautes et basses concentrations d'acides et de bases Chemikalienfestigkeit bei hohen und niedrigen Konzentrationen von Säuren und Basen Resistencia química con concentraciones altas y bajas de ácidos y bases Химическая стойкость к высоким и низким концентрациям кислот и щелочей
	RESISTENZA ALLE MACCHIE Stain resistance - Résistance aux taches - Fleckenbeständigkeit Resistencia a las manchas - Стойкость к образованию пятен		
			COEFFICIENTE DI ATTRITO Slip resistance - Coefficient de glissement - Rutschfestigkeit Barfußbereich Coeficiente de atrito medio - Коэффициент трения
DIN 51097	-		
ANSI A 137.1- 2012 DCOF (SECTION 9.6)	WET ≥ 0,42		
B.C.R.A.	≥ 0,40		

Per maggiori chiarimenti sui dati tecnici e sulla garanzia consultare il catalogo generale in vigore. - For further information on technical specifications, please consult our up-dated general catalogue. - Pour toutes informations supplémentaires sur les données techniques et sur les garanties, veuillez consulter le catalogue general en vigueur. - Für weitere Informationen über technische Daten und Garantie beziehen sie sich bitte auf den aktuellen Gesamtkatalog. - Para ultiores informaciones sobre los datos técnicos y la garantía, vease el catalogo general en vigor. - Более подробную информацию о технических данных и гарантии смотрите в действующем сводном катал.



Articolo	Formato (cm)	Spessore (mm)	Pz. x Mq.	Pz. x Scat.	Mq. x Scat.	Peso x Scat. (Kg)	Scat. x Pal.	Mq. x Pal.	Peso x Pal. (Kg)
Item	Size (cm)	Thickness (mm)	Pieces x Sqm	Pieces x Box	Sqm x Box	Weight x Box (Kg)	Boxes x Pal.	Sqm x Pal.	Weight x Pal. (Kg)
Reference	Format (cm)	Epaisseur (mm)	Pcs / M ²	Pcs / Bte	M ² / Bte	Poids / Bte (Kg)	Bte / Pal.	M ² / Pal.	Poids / Pal. (Kg)
Artikel	Format (cm)	Stärke (mm)	Stk. x Qm	Stk. x Krt.	Qm x Krt.	Gewicht x Krt. (Kg)	Krt. x Pal.	Qm x Pal.	Gewicht x Pal. (Kg)
Articulo	Tamaño (cm)	Espesor (mm)	Pzs x Mc.	Pzs x Caja	Mc. x Caja	Peso x Caja (Kg)	Cajas x Pal.	Mc. x Pal.	Peso x Pal. (Kg)
Артикула	Формат (cm)	Толщина (mm)	Шт. x Кв.М.	Шт. x Кор.	Кв.М. x Кор.	Вес x Кор. (Kg)	Кор. x Подд.	Кв.М x Подд.	Вес x Подд. (Kg)
983J_R	60X120	10	1,39	2	1,440	35,00	22	31,68	770
803J_R	80X80	10	1,56	2	1,280	32,00	40	51,20	1280
603J_R	60X60	10	2,78	3	1,080	24,50	40	43,20	980
633J_R	30X60	10	5,56	6	1,080	24,50	40	43,20	980
D303J_	29X29	10	11,89	5	0,421	10,42	-	-	-
T303J_	29X29	10	11,89	5	0,421	10,42	-	-	-
I303J_	30X30	10	11,11	5	0,450	10,00	-	-	-
803J_RB	80X80	10	1,56	2	1,280	32,00	-	-	-
633J_RD	30X60	10	5,56	2	0,360	8,20	-	-	-
023J_RC	20X20	10	25	18	0,720	17,00	-	-	-





Une collection inspirée de vieux bois laqués montrant leurs éraflures et leurs signes d'usure. Des traces laissées par le temps, le brillant d'origine de la surface laquée et l'opacité résultant d'une utilisation constante, capturent l'émotion la plus intime du vécu, de manière encore plus précise. Proposée en 4 coloris naturels, Bianco, Grigio, Cenere et Nero, L'H est une collection destinée à donner à des espaces raffinés et sophistiqués une empreinte originale et chaleureuse.

Eine Kollektion aus lackierten wiedergewonnenen Hölzern, die sich durch sichtbare Schrammen und Gebrauchsspuren auszeichnen. Die Hinterlassenschaften der Zeit und der Kontrast zwischen dem ursprünglichen Glanz des Lacks und den matten Spuren des dauerhaften Gebrauchs vermitteln ein intimes, eindrückliches Gefühl für das gelebte Leben dieser Hölzer. L'H ist in vier natürlichen Farben erhältlich: Bianco, Grigio, Cenere und Nero. Die Kollektion ist prädestiniert, um einem erlesenen Ambiente Originalität und Wärme zu verleihen.

Colección de maderas recicladas lacadas que se caracterizan por presentar arañazos y señales de desgaste. Las huellas del tiempo, el contraste entre el brillo original del lacado y el mate de las señales provocadas por el uso constante cautivan la emoción más íntima de lo vivido de manera aún más definida. Propuesta en cuatro colores naturales —Bianco, Grigio, Cenere y Nero— L'H es una colección concebida para imprimir originalidad y calidez a ámbitos refinados y sofisticados.

Коллекция лакированного, повторно использованного дерева, которую характеризуют царапины и следы износа. Следы времени, контраст между первоначальным блеском лакировки и матовостью следов постоянного использования вызывают самые яркие и сокровенные эмоции. L'H, предлагаемая в 4 натуральных цветах - Bianco, Grigio, Cenere и Nero, является коллекцией, наделяющей оригинальностью и теплом изысканные и тонкие интерьеры.

LH
LACCA



Viva Made is a brand of Emilceramica S.r.l. a socio unico	Sede commerciale/amministrativa
info@emilceramicagroup.it emilgroup.it/viva	Via Ghiarola Nuova, 33/29 - 41042 Fiorano Modenese (Mo) - Italy T +39 0536 998701 F +39 0536 998702

